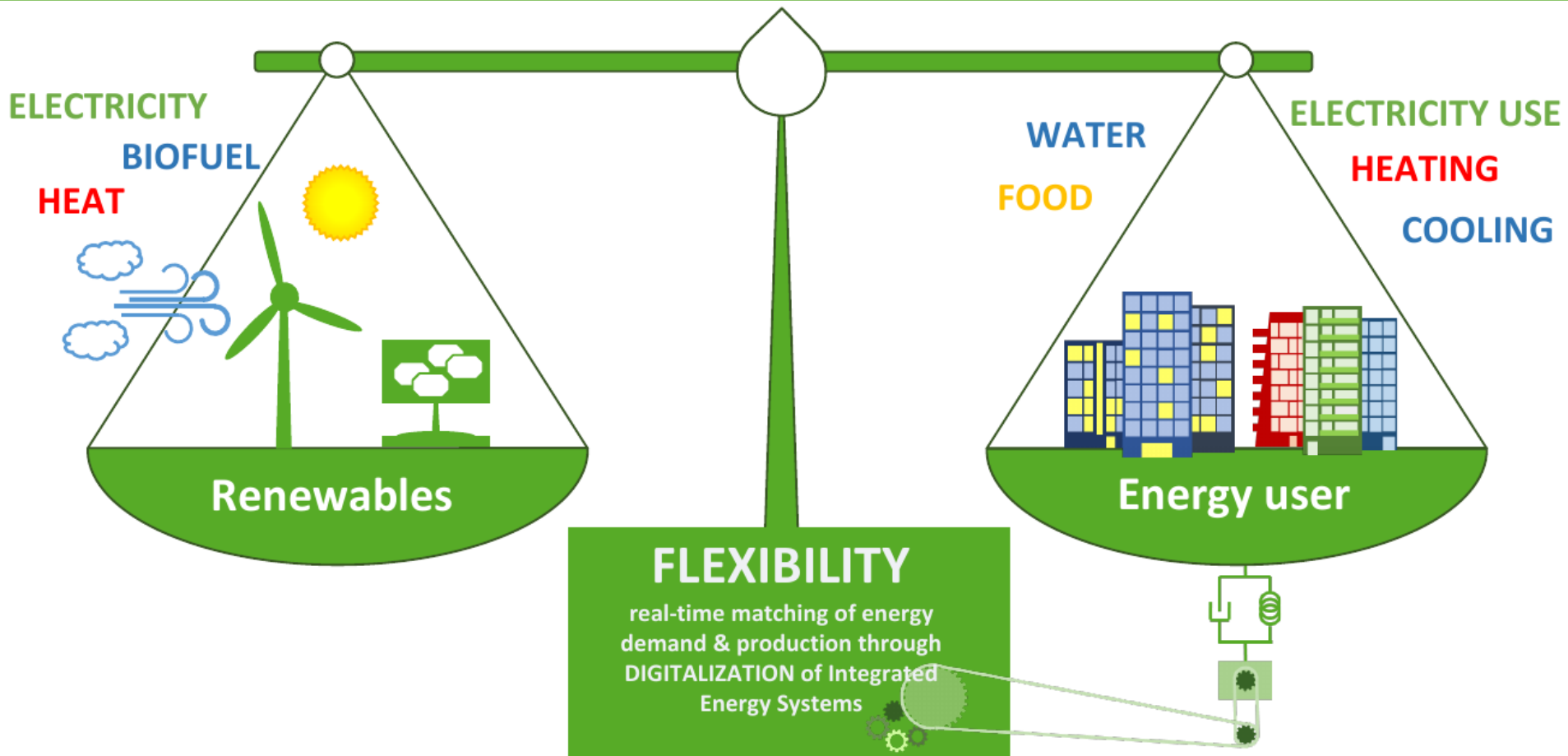


Use of Smart Meter Data for Smart Grid Solutions

Henrik Madsen, Razgar Ebrahimi, Mohsen Banaei - DTU Compute

(IFD projects: Flexible Energy Denmark + Cool Data + RePUP)
(EU/BRIDGE projects: ELEXIA + ARV + ebalanceplus + CitCom.ai)

The Challenge: Denmark Fossil Free 2050

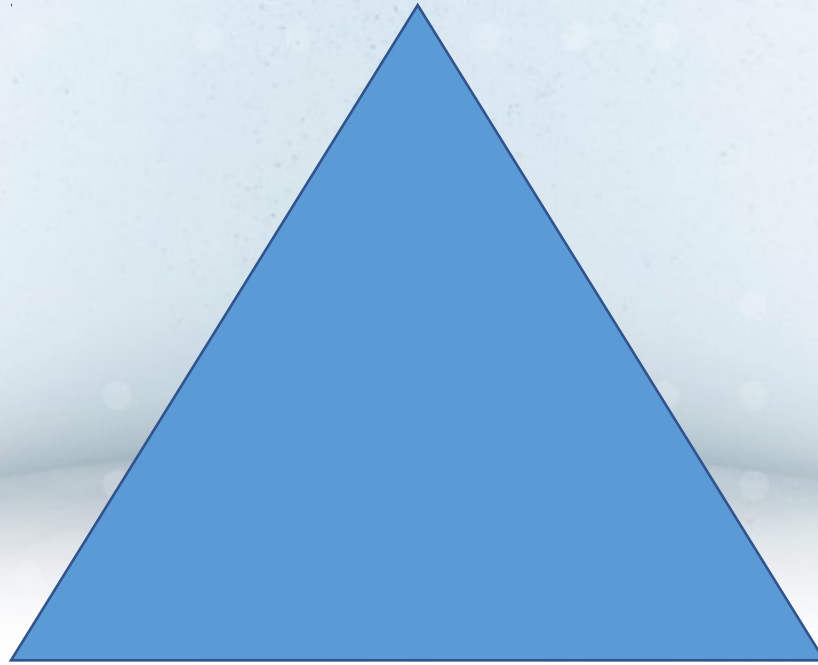


Space of Solutions

Flexibility

(enabled by **AI, Digital Twins, Edge Comp., IoT**)

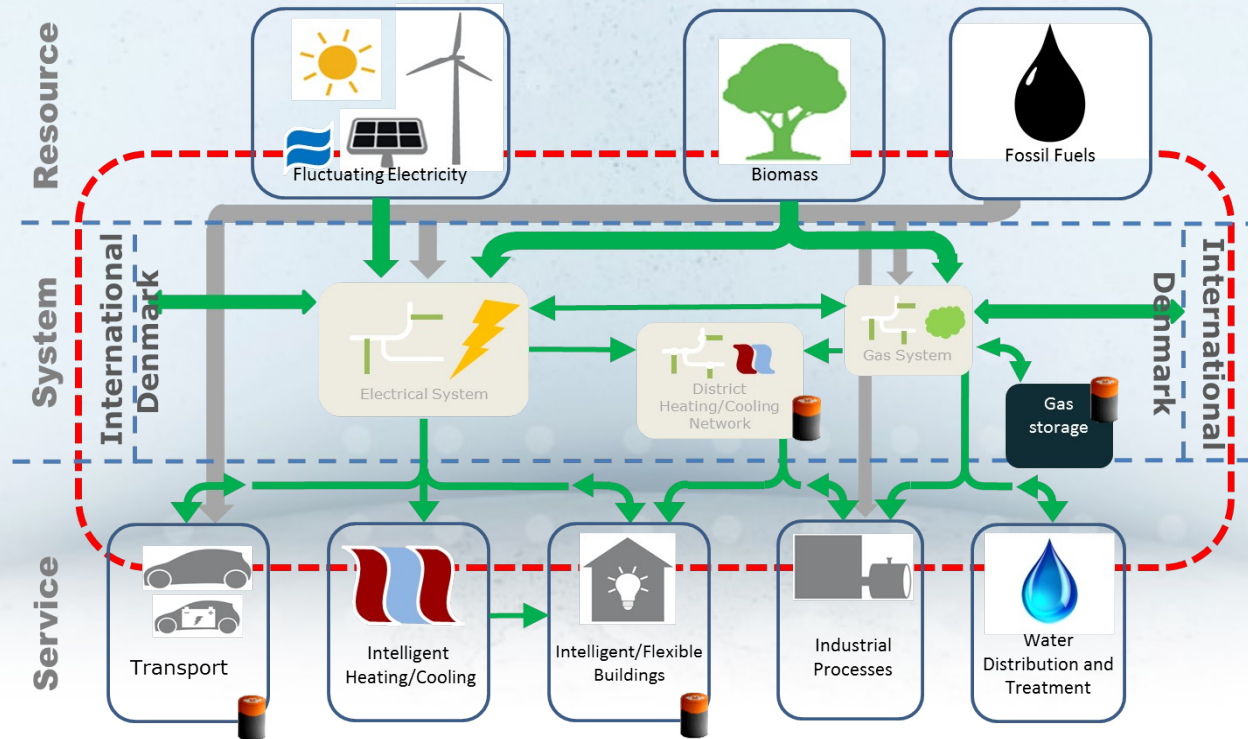
Grids



Batteries

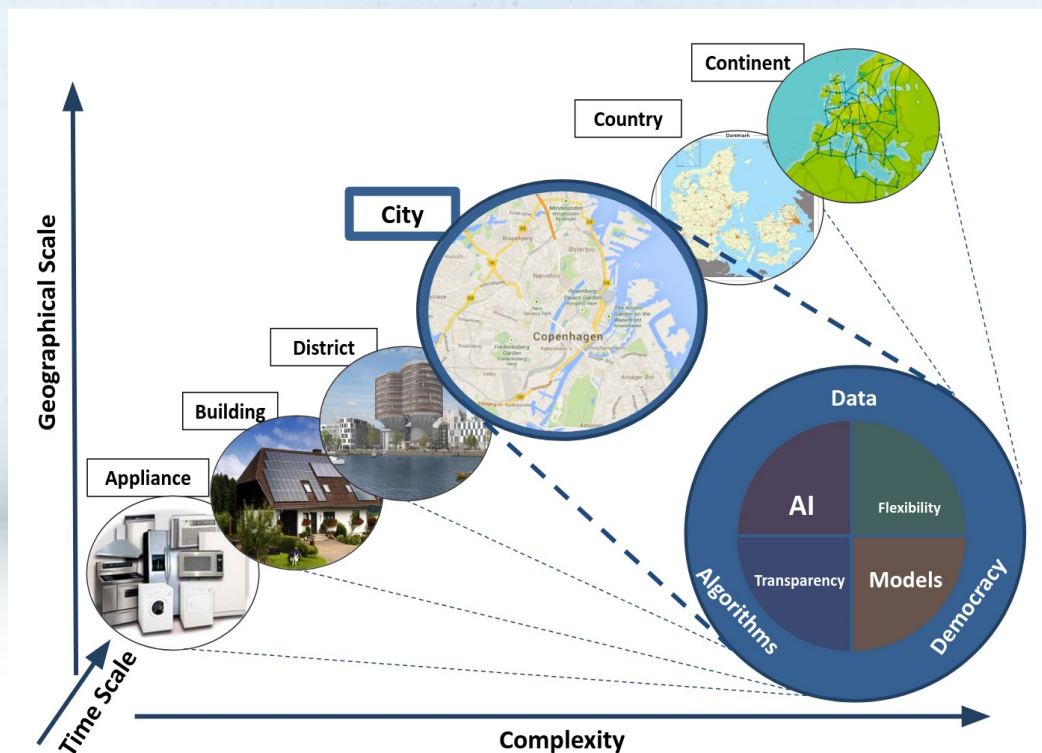
Data-driven Digital Twins for Real Time Applications

Grey-box models are simplified Digital Twin models facilitating system integration and use of sensor data in real-time



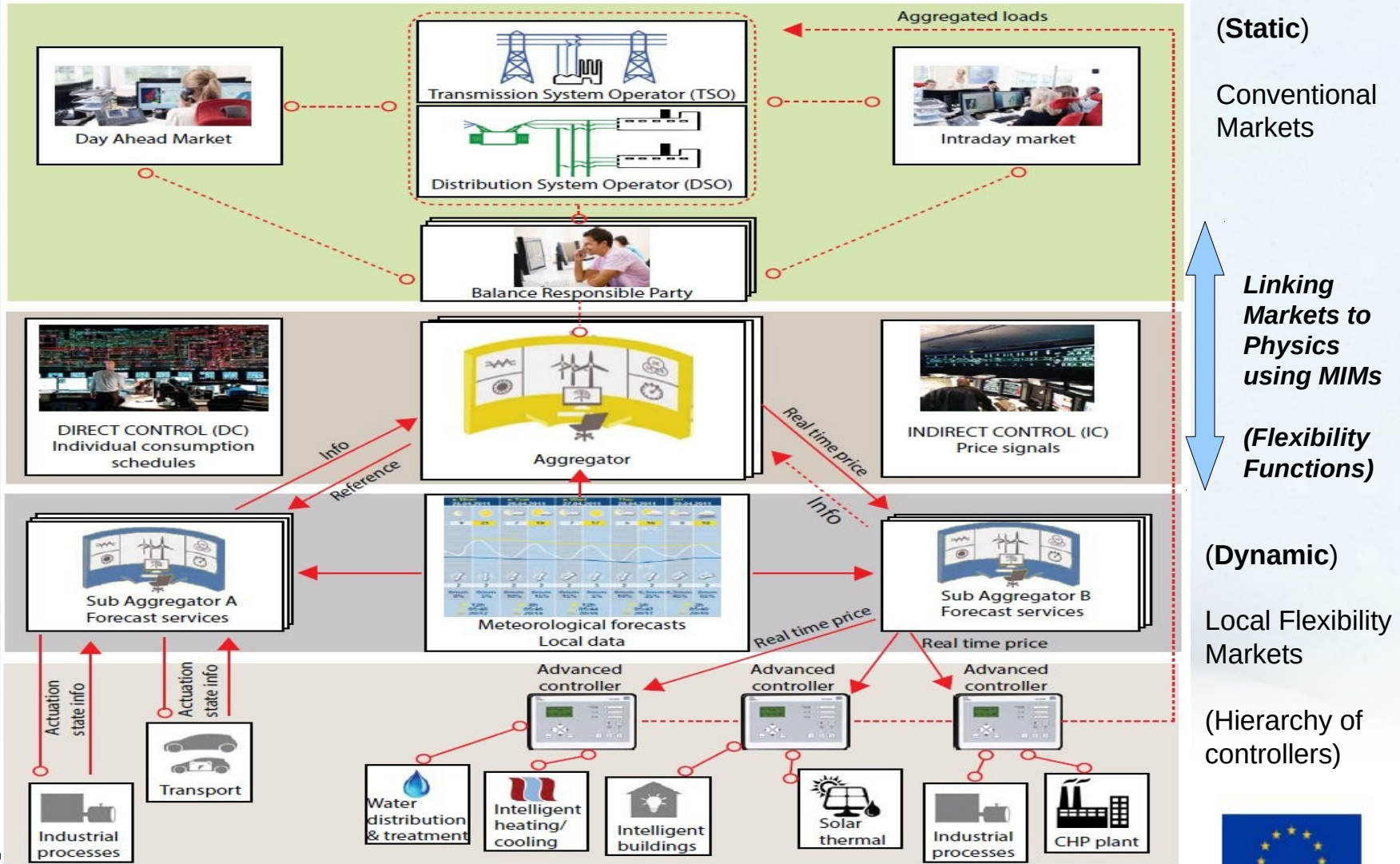
Temporal and Spatial Coherency

A so-called **Smart-Energy Operating-System (SE-OS)** is developed in order to develop, implement and test solutions (layers: data, models, optimization, control, communication) for **operating flexible electrical energy systems at all scales.**



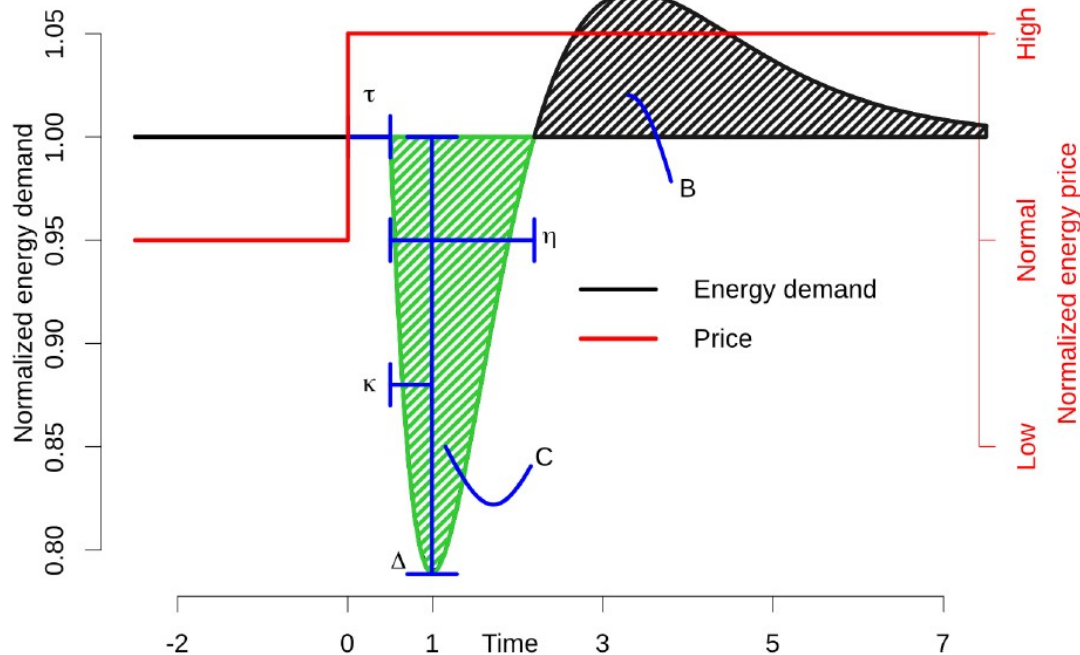
Smart-Energy OS

The Transformative Power of Digitalization and Decentralization



Flexibility Function

The **Flexibility Function (FF)** is a MIMs for energy systems used to characterize flexibility using Edge AI and providing an interface between local and high-level markets.



Flexible Users and Penalty Signals

Penalty Generator for, e.g.:

Voltage Control,
Balancing,
Congestion Management
...

Reference

**Penalty Generator
(Controller)**

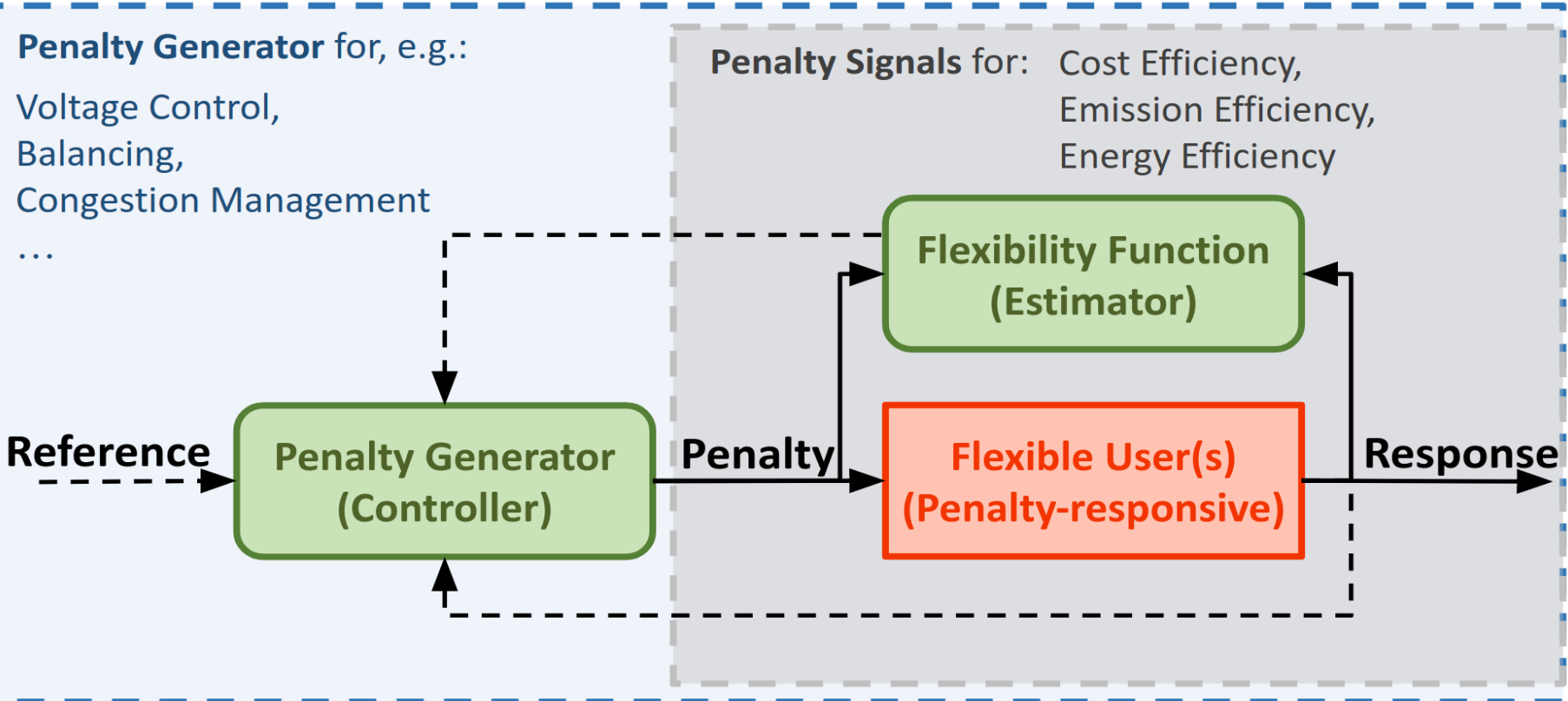
Penalty

**Flexibility Function
(Estimator)**

**Flexible User(s)
(Penalty-responsive)**

Response

Penalty Signals for: Cost Efficiency,
Emission Efficiency,
Energy Efficiency

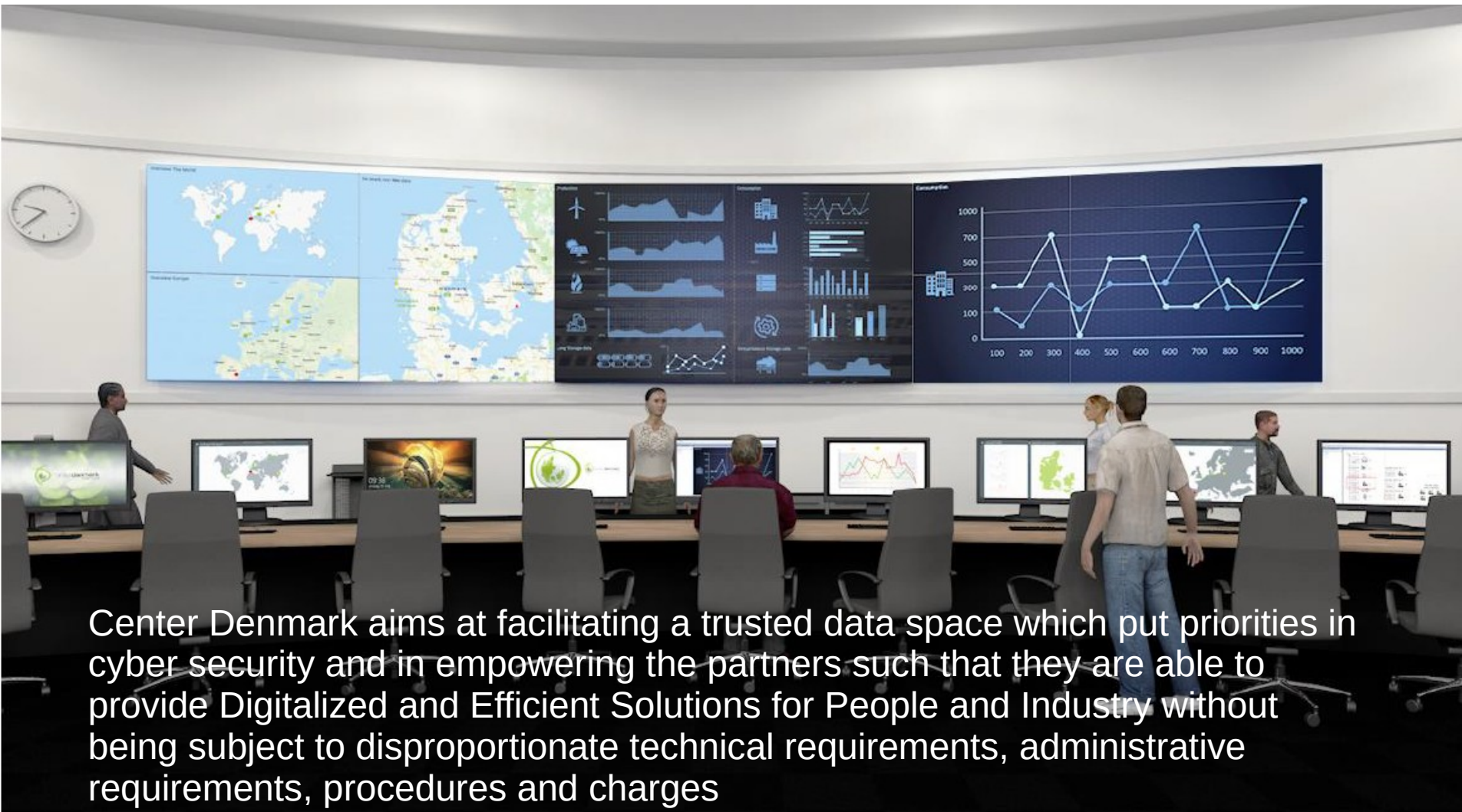


Case Study

Summerhouses with a pool



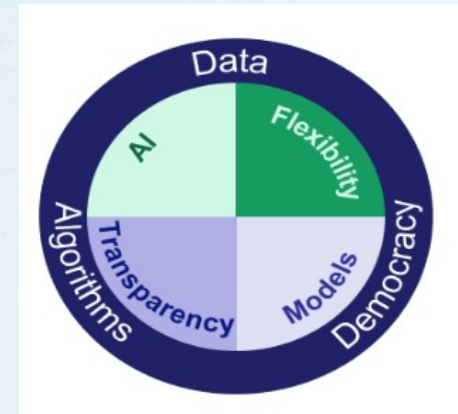
Center Denmark: Cloud <-> Edge Spatial-Temporal Thinking Control Room and Data Space



Center Denmark aims at facilitating a trusted data space which put priorities in cyber security and in empowering the partners such that they are able to provide Digitalized and Efficient Solutions for People and Industry without being subject to disproportionate technical requirements, administrative requirements, procedures and charges

Summary

- An efficient implementation of the **future weather-driven** energy system calls for **data-driven Smart Energy Systems – meter data essential**
- We need **digitalisation and IoT solutions for activating flexibility everywhere**
- We need a **hierarchy of Data-Driven Digital Twins**
- **Minimum Interoperability Mechanisms (MIMs)** are building blocks for sector coupling and for implementing IoT solutions with a focus on optimal **Edge – Fog – Cloud computing**
- The **Flexibility Function** is one of the **important MIMs** for linking high-level conventional **markets** with the low-level **physics**
- **Security, GDPR and Privacy by Design**
- We need **transparent, safe, fair and democratic** solutions
- We have proposed to use **distributed (edge-fog-cloud) control-based methods for activating local flexibility (Smart-Energy OS)**
- **Savings:** Wastewater treatment 40 – 50 pct; Summer houses: 20 – 30 pct





Thank you !
Connect – Share – Innovate

contact data:

Henrik Madsen hmad@dtu.dk

