

Efficient Implementation of Weather-driven Energy Systems



Henrik Madsen

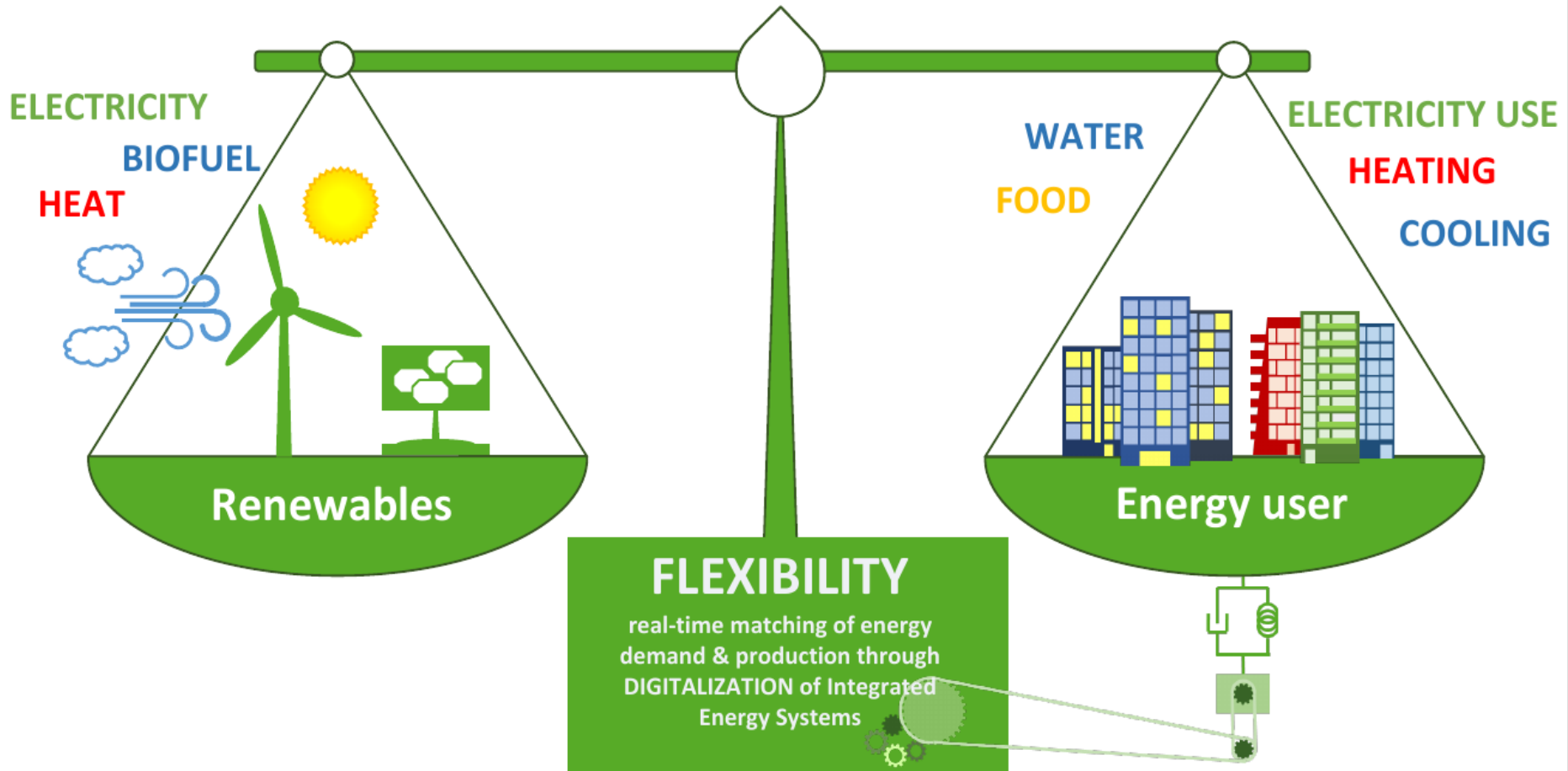
Applied Mathematics and Scientific Computing (DTU)

<https://www.flexibleenergydenmark.dk/>

<https://www.smart-cities-centre.org>

<http://www.henrikmadsen.org>

The Challenge: Denmark Fossil Free 2050



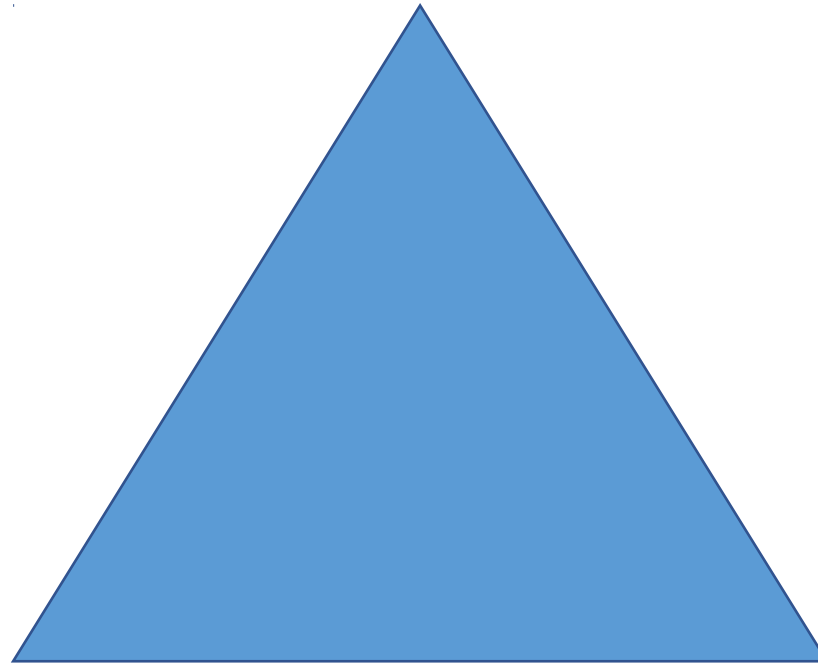
Data-Intelligent and Flexible Energy Systems



Space of Solutions

Flexibility

(enabled by **Energy Systems Integration, PtX, AI, IoT, Big Data, ...**)



**(Super)
Grids**

Batteries

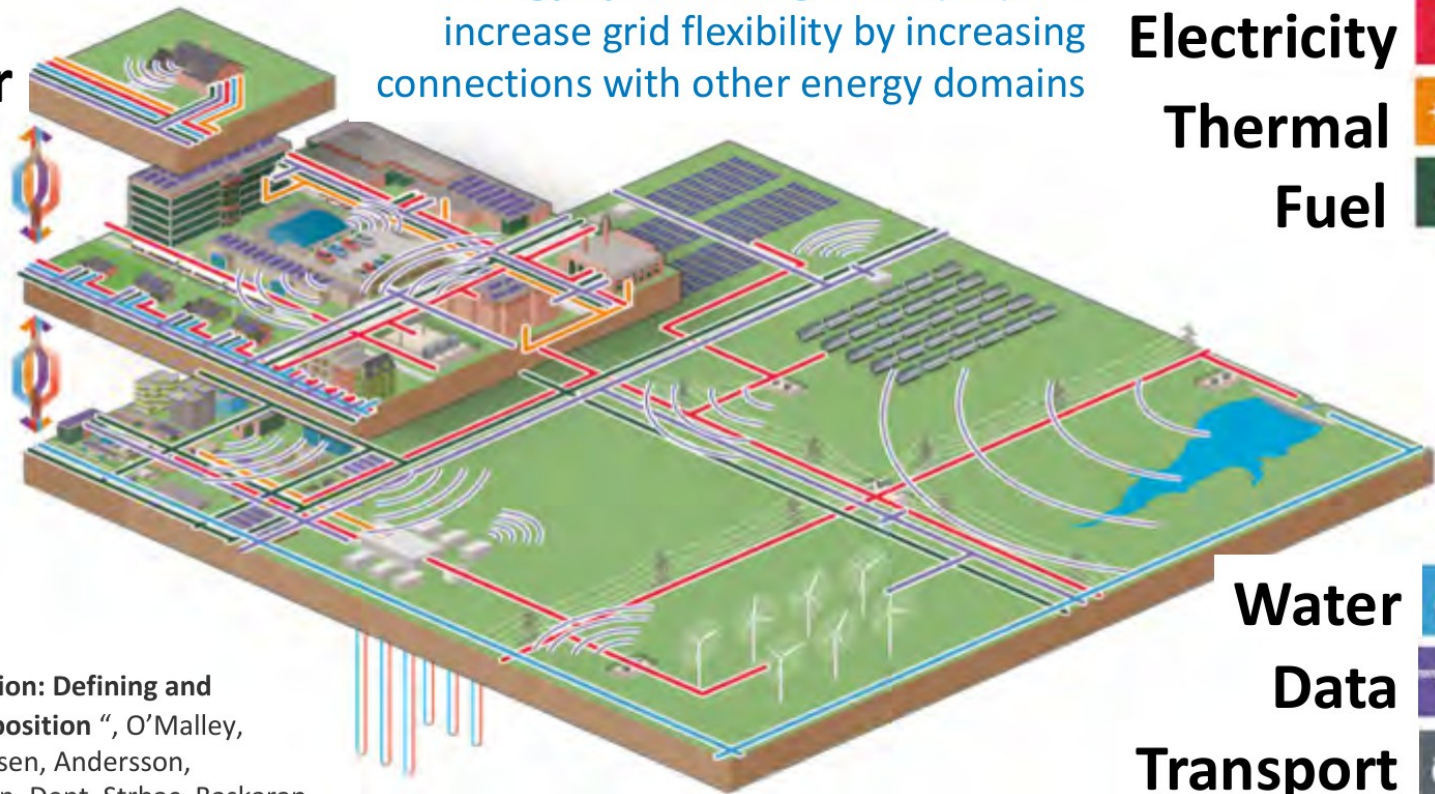
Energy Systems Integration

Energy System Integration (ESI) can increase grid flexibility by increasing connections with other energy domains

Customer

City

Region



Electricity



Thermal



Fuel



Water



Data

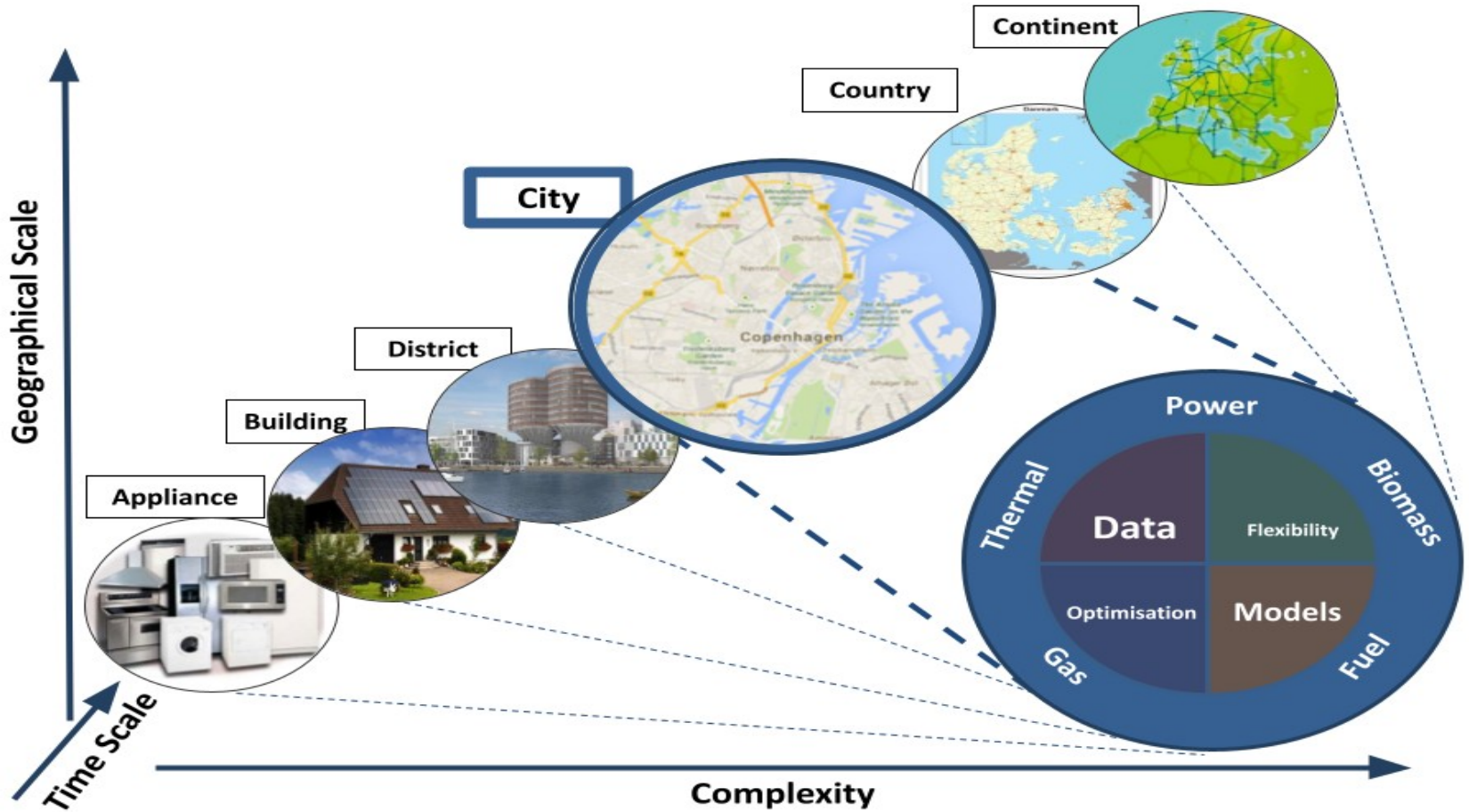


Transport



“Energy Systems Integration: Defining and Describing the Value Proposition”, O’Malley, Kroposki, Hannegan, Madsen, Andersson, D’haeseleer, McGranaghan, Dent, Strbac, Baskaran, Rinker., NREL/TP-5D00-66616. June 2016

Temporal and Spatial Scales



Center Denmark

National and Int. Digitalization Hub for Accelerating the Green Transition



CENTER
DENMARK



Connect networks and data
for a green world

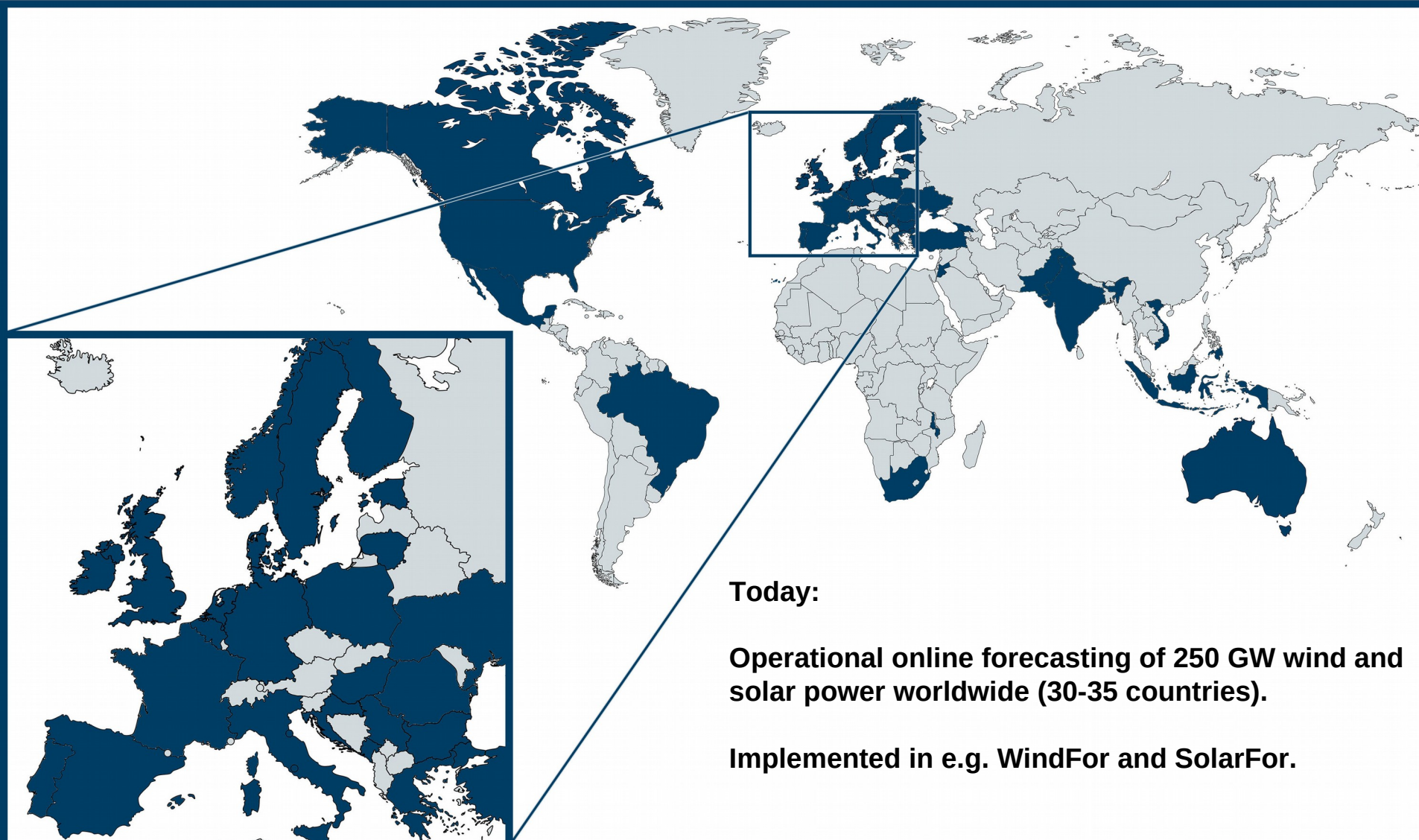


Center Denmark - Control Room

Spatial-Temporal thinking



Wind Power Forecasting Using API's developed at DTU

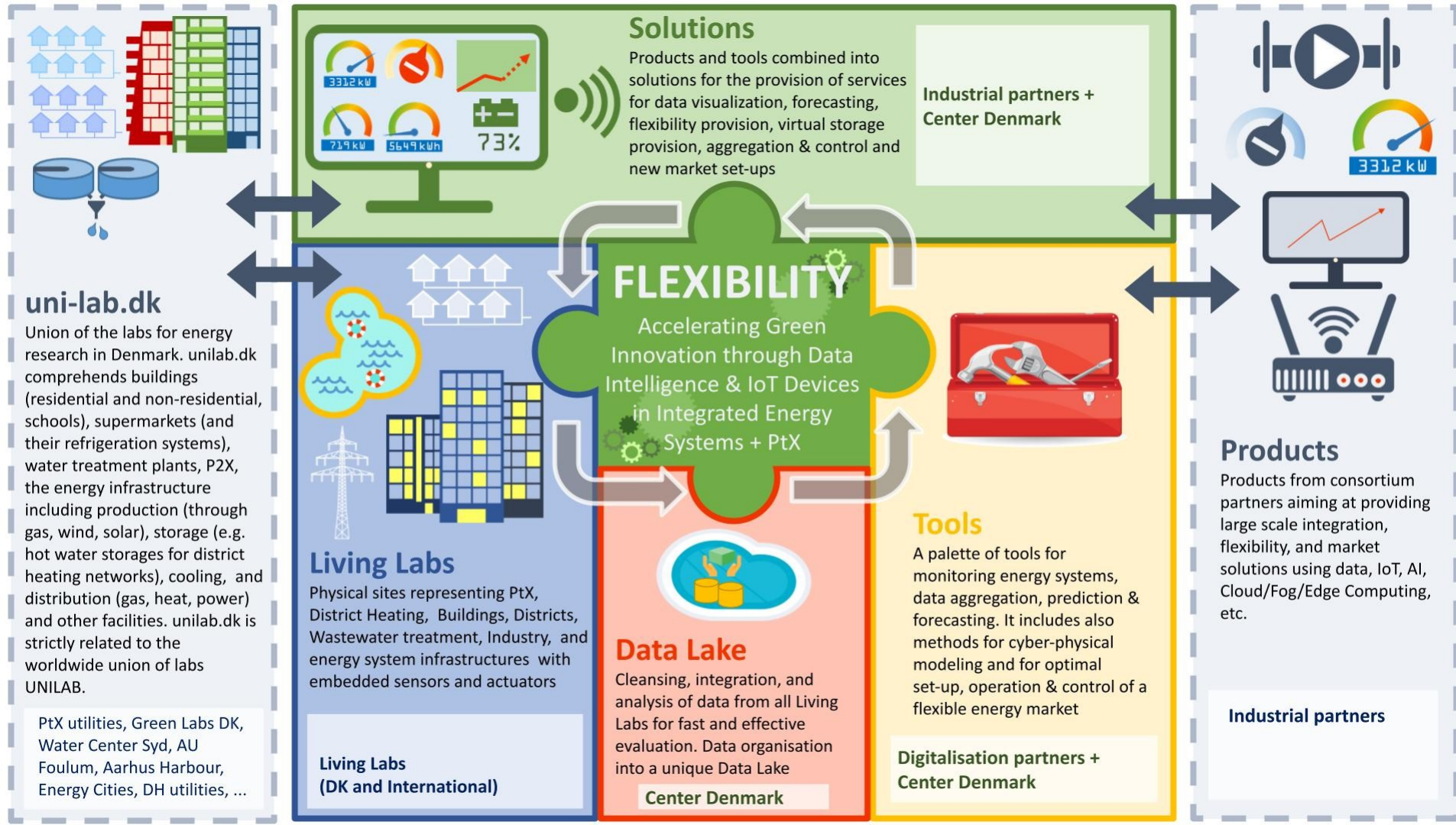


Today:

Operational online forecasting of 250 GW wind and solar power worldwide (30-35 countries).

Implemented in e.g. WindFor and SolarFor.

Business Ecosystem and TRL Progression

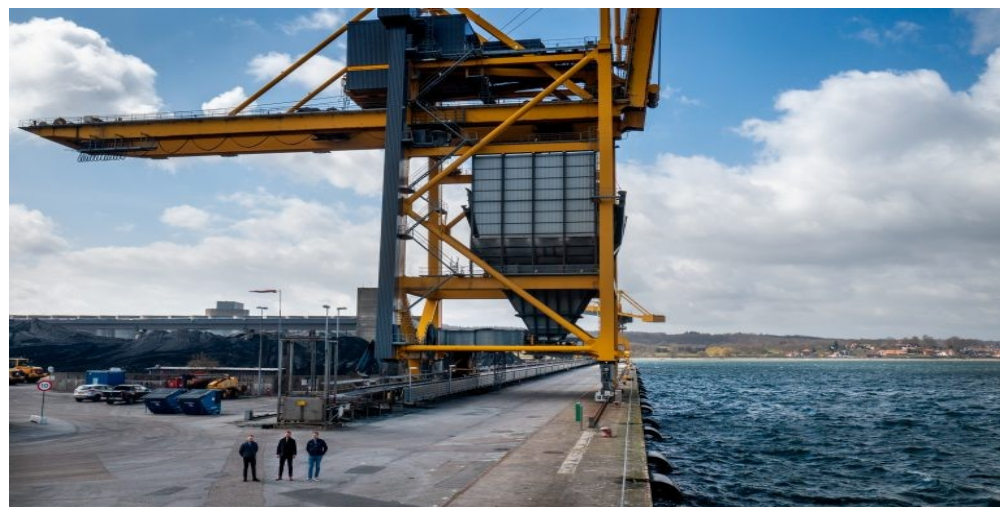


New projects (Examples)

- +1B Euros, Port of Sines (ELEXIA project)



- +800 Mio DKK
Port of Aabenraa
(+100 MW H₂ capacity)
(DynFlex project – IM2)



Summary

- The future weather-driven energy system calls for **disruptions**.
- We need **deep digitalisation** (AI, IoT, Cloud/Fog/Edge Computing, etc.)
- We need large scale **Energy Systems Integration** and **PtX**.
- We need **transparent, safe** and **democratic** solutions.
- We need **data hubs** for energy related streaming data services.
- We need roadmaps for **TRL progression** and a **Business Ecosystem** with **Living Labs**

